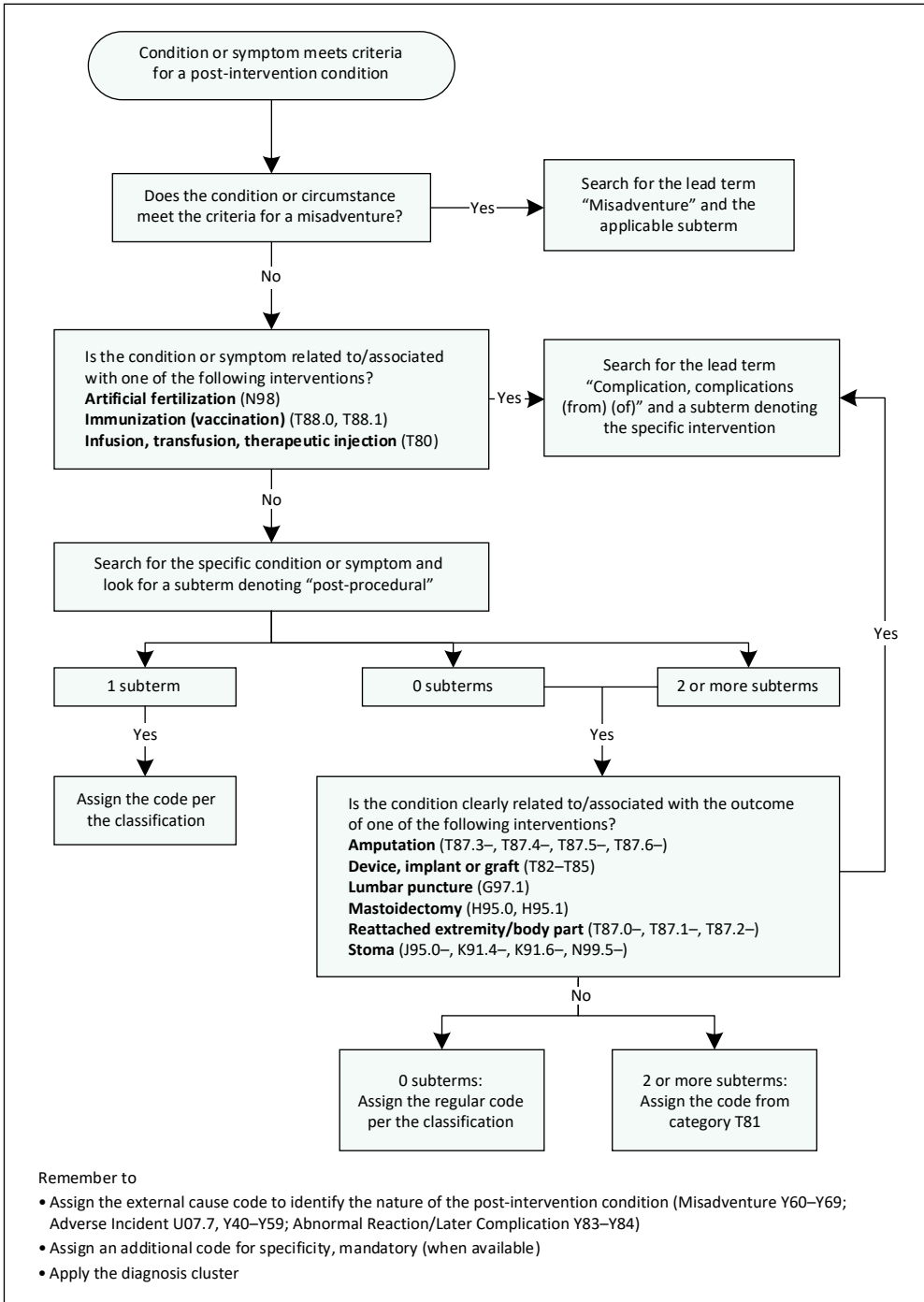




Post-Intervention Condition: Locating the Primary Code

Figure How to locate the primary code





Appendix

Text alternative for figure

Figure: How to locate the primary code

When a condition or symptom meets the criteria for a post-intervention condition and also meets the criteria for a misadventure, search for the lead term “Misadventure” and the applicable subterm.

When the condition or symptom does not meet the criteria for a misadventure and is related to or associated with one of the following interventions — Artificial fertilization (N98), Immunization (vaccination) (T88.0, T88.1) or Infusion, transfusion, therapeutic injection (T80) — search for the lead term “Complication, complications (from) (of)” and a subterm denoting the specific intervention.

When the condition or symptom is **not** related to or associated with one of those interventions, search for the specific condition or symptom and look for a subterm denoting post-procedural.

When there is 1 subterm denoting post-procedural, assign the code per the classification.

When there are no subterms or 2 or more subterms denoting post-procedural and the condition is clearly related to or associated with the outcome of one of the following interventions — Amputation (T87.3–, T87.4–, T87.5–, T87.6–), Device, implant or graft (T82–T85), Lumbar puncture (G97.1), Mastoidectomy (H95.0, H95.1), Reattached extremity/body part (T87.0–, T87.1–, T87.2–) or Stoma (J95.0–, K91.4–, K91.6–, N99.5–) — search for the lead term “Complication, complications (from) (of)” and a subterm denoting the specific intervention.

When there are no subterms denoting post-procedural and the condition or symptom is **not** clearly related to or associated with the outcome of one of those interventions, assign the regular code per the classification.

When there are 2 or more subterms denoting post-procedural and the condition or symptom is **not** clearly related to or associated with the outcome of one of those interventions, assign the code from category T81.

Remember to assign the external cause code to identify the nature of the post-intervention condition (Misadventure Y60–Y69; Adverse Incident U07.7, Y40–Y59; Abnormal Reaction/Later Complication Y83–Y84).

Remember to assign an additional code for specificity; it’s mandatory, when available.

Remember to apply the diagnosis cluster.



classifications@cihi.ca