

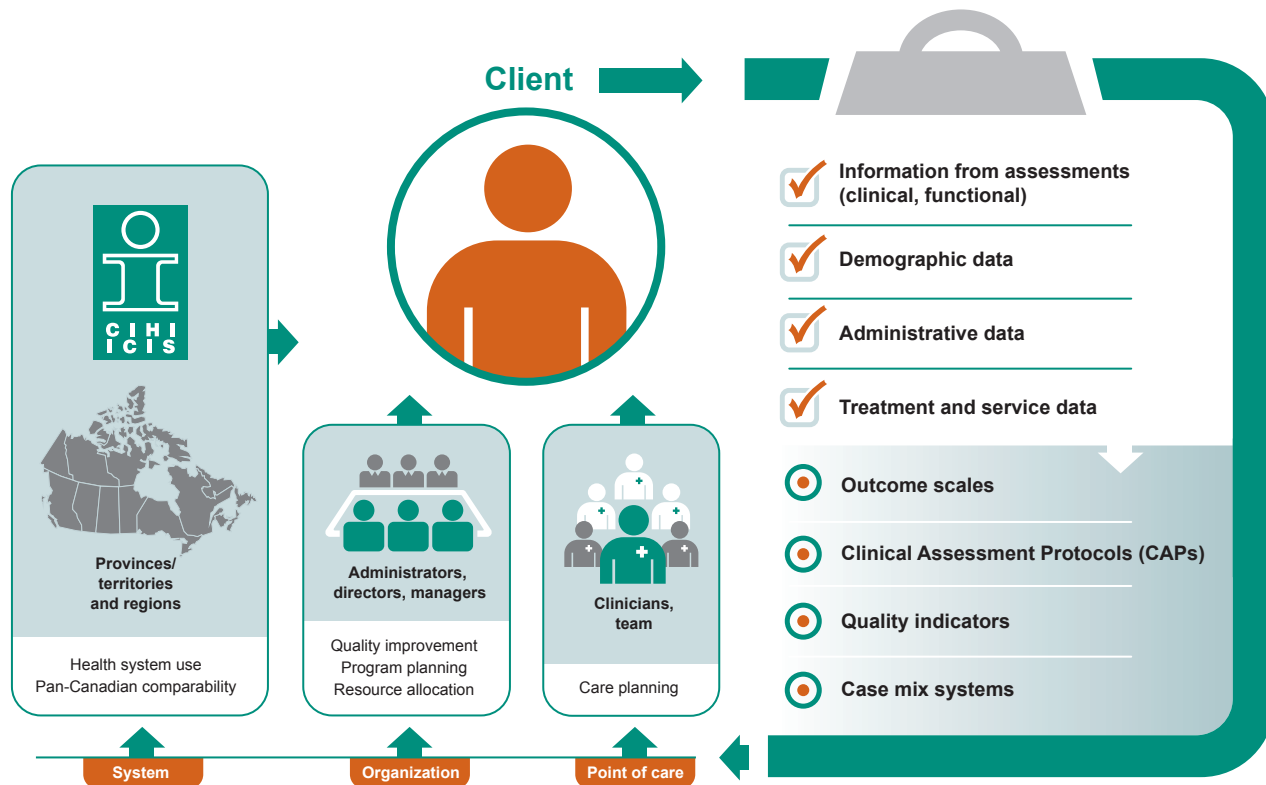


# Continuing Care Reporting System and RAI-MDS 2.0

## Overview

The Continuing Care Reporting System (CCRS) — 1 of 31 data holdings of the Canadian Institute for Health Information (CIHI) — collects and reports data from the Resident Assessment Instrument–Minimum Data Set 2.0 (RAI-MDS 2.0)©. This standardized clinical assessment was developed by [interRAI](#), a not-for-profit international research network committed to improving care for people with complex medical needs.

The RAI-MDS 2.0 assessment instrument is designed to be used in hospital-based and residential continuing care. Along with administrative, demographic and resource utilization data, the RAI MDS 2.0 data is submitted to CCRS and made available across Canada for planning and monitoring care, understanding populations, improving quality and allocating resources.



## Measures available through CCRS

### Outcome scales

Person-level measures of clinical and functional status. Examples include

- interRAI Pressure Ulcer Risk Scale
- Cognitive Performance Scale
- Changes in Health, End-Stage Disease and Signs and Symptoms (CHESS)

### Clinical Assessment Protocols (CAPs)

Person-level reports that identify areas where there is risk of decline or potential to improve. Examples include

- Activities of Daily Living
- Physical Restraints
- Pain

### Quality indicators

Organization-level measures of quality across key domains, including safety, health status, appropriateness and effectiveness. Examples include

- Potentially Inappropriate Use of Antipsychotics
- Restraint Use
- Worsened Pressure Ulcer

### Case mix systems

Organization-level reports that group residents according to clinical characteristics and resource use. Resource Utilization Group (RUG) clinical categories include

- Special Rehabilitation
- Extensive Services
- Clinically Complex Care
- Behaviour Problems

## Accessing CCRS data

### Publicly available

Jurisdiction-level tables with administrative, clinical and resource use information are available through [CIHI's Quick Stats page](#).

Jurisdiction and facility-level results for selected quality indicators are available in [CIHI's Your Health System web tool](#).

### CCRS eReports

CCRS eReports provide submitting organizations with secure, web-based access to comparable jurisdiction- and facility-level RAI-MDS 2.0 and related data in a user-friendly, interactive environment.

### Data requests

Researchers, decision-makers and health managers can request specific RAI-MDS 2.0 and CCRS data from CIHI at an aggregate or record level to suit their information needs. Interested? Complete and submit the [Data Inquiry Form](#) available on CIHI's website.



For data-specific information:  
[continuingcare@cihi.ca](mailto:continuingcare@cihi.ca)

